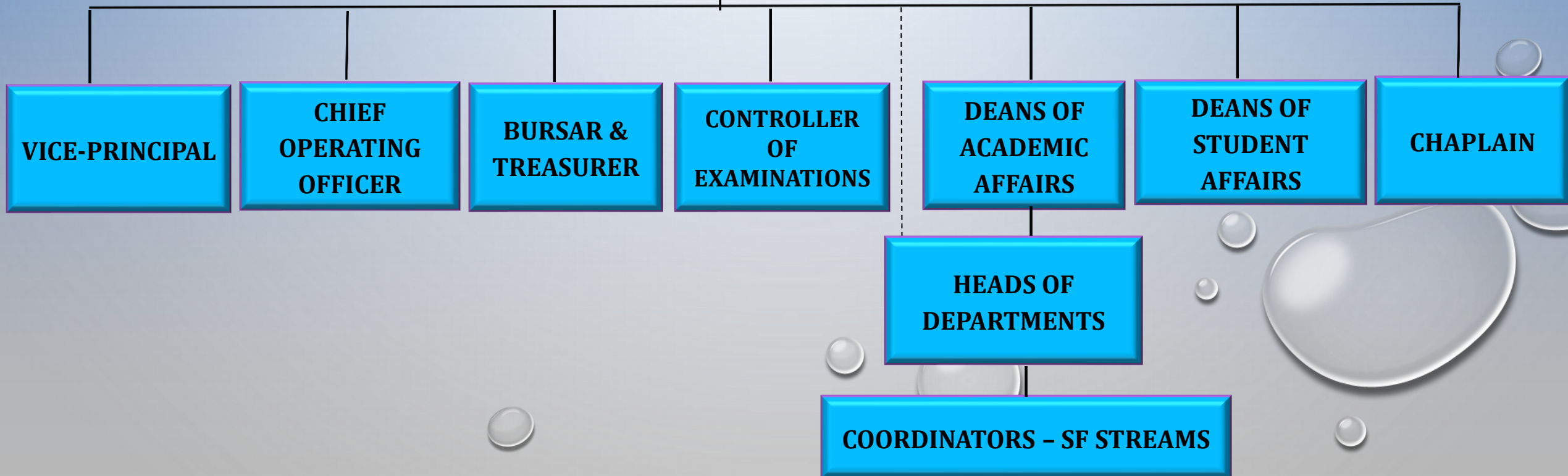


LADY DOAK COLLEGE

ORGANISATIONAL STRUCTURE - 2021

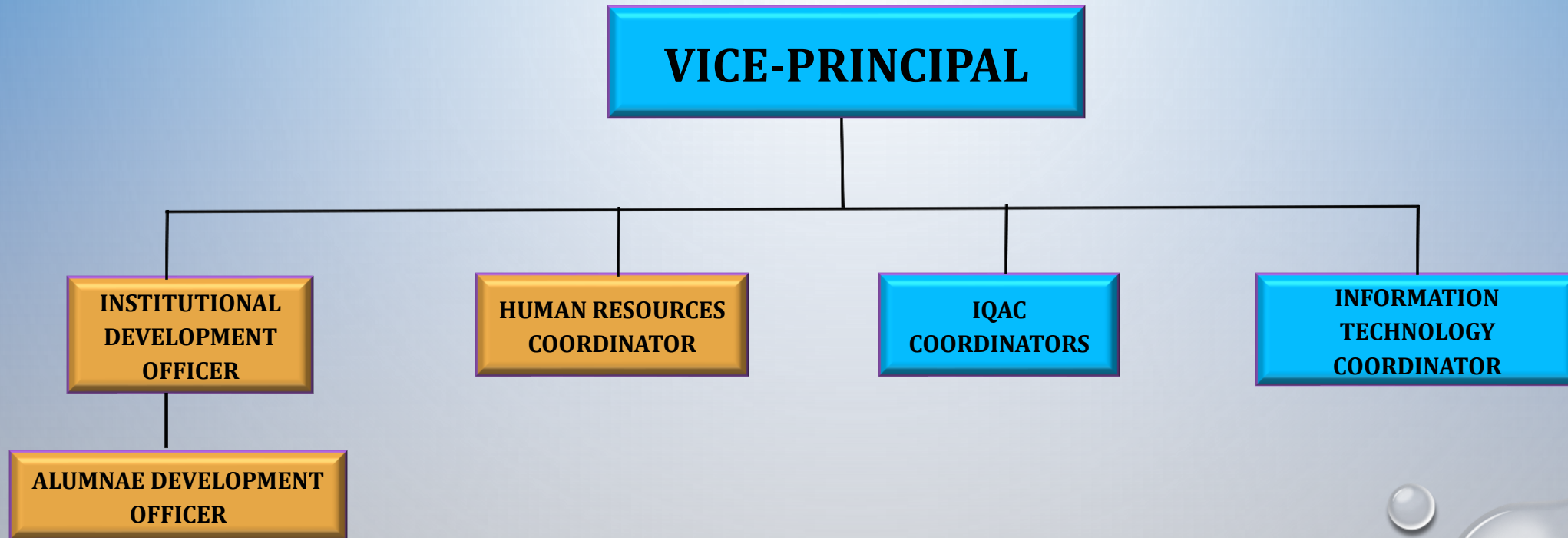
ORGANISATIONAL STRUCTURE

**PRINCIPAL &
SECRETARY**



ORGANISATIONAL STRUCTURE

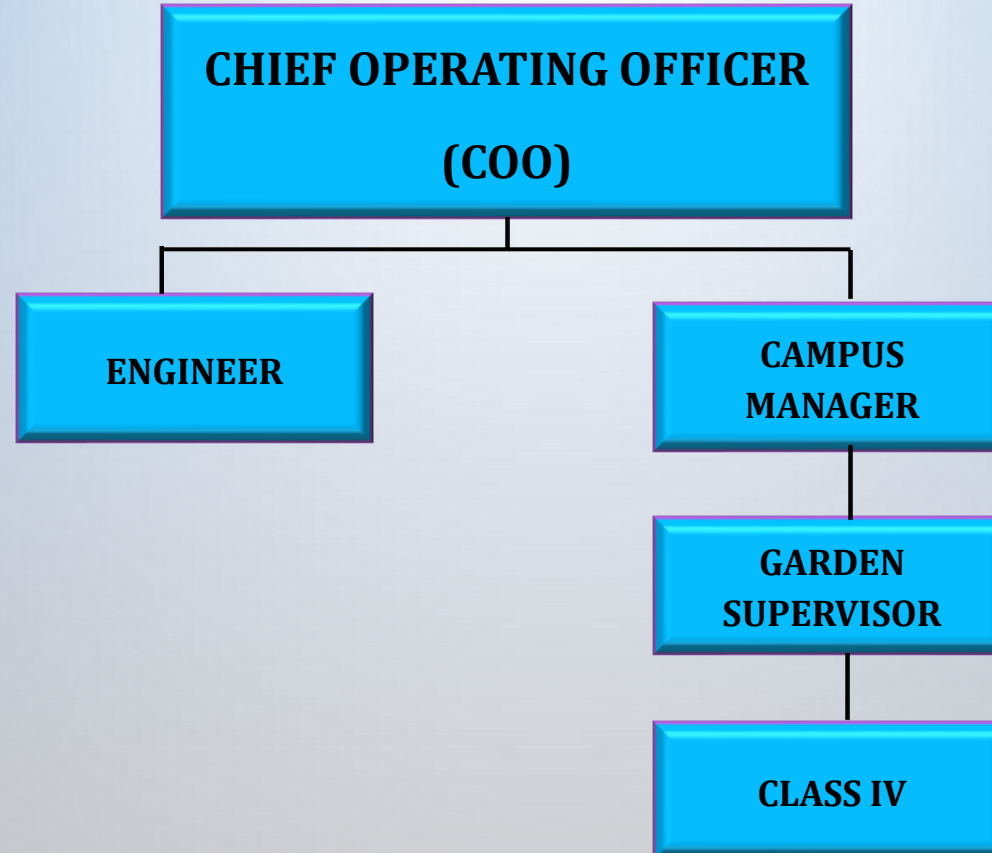
ADMINISTRATION



 **NEW POSITION – To be appointed**

ORGANISATIONAL STRUCTURE

OPERATIONS



ORGANISATIONAL STRUCTURE

FINANCE

BURSAR

```
graph TD; BURSAR[BURSAR] --- MANAGER_ACCOUNTS[MANAGER ACCOUNTS]; MANAGER_ACCOUNTS --- ACCOUNTANT[ACCOUNTANT];
```

MANAGER ACCOUNTS

ACCOUNTANT

ORGANISATIONAL STRUCTURE

ACADEMICS

**DEANS OF ACADEMIC AFFAIRS
(Humanities & Sciences)**

**ASST. DEANS OF ACADEMIC AFFAIRS
(Humanities & Sciences)**

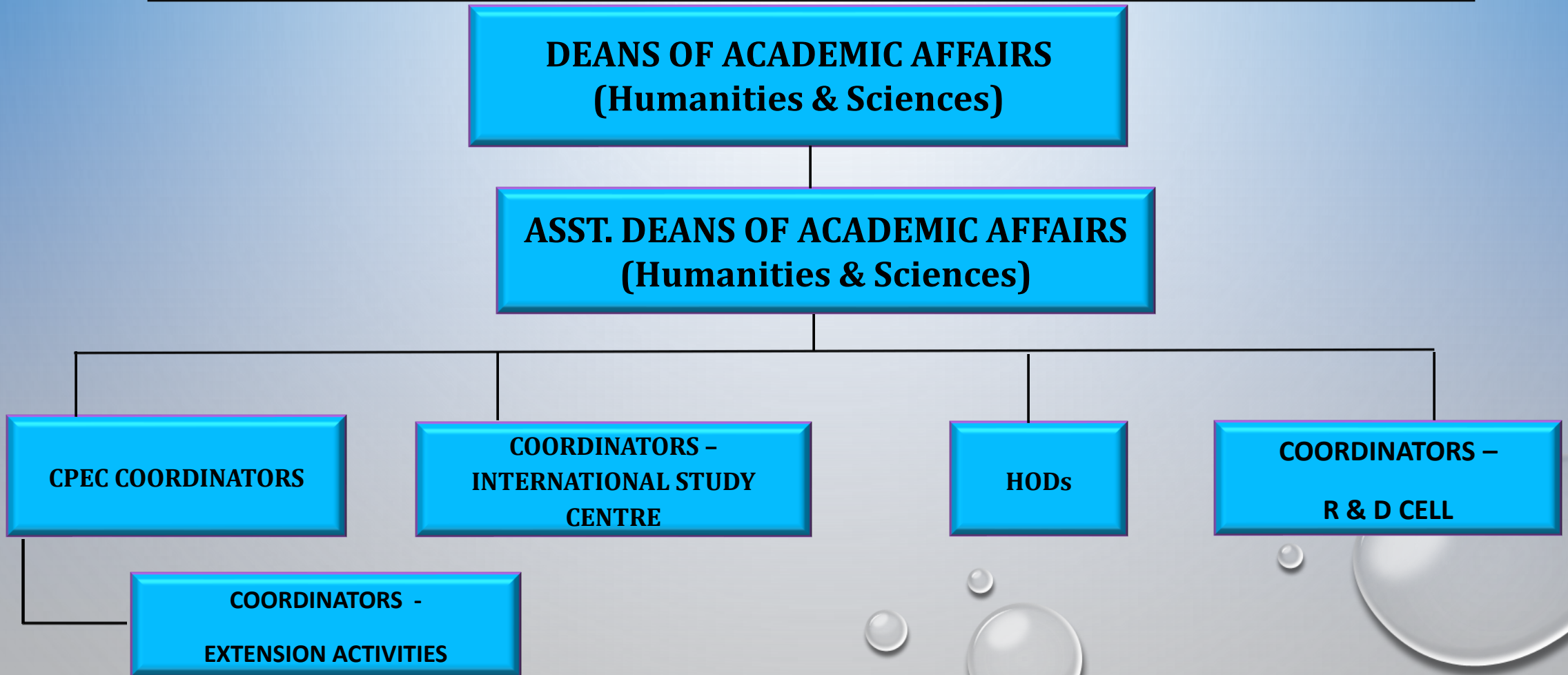
CPEC COORDINATORS

**COORDINATORS -
INTERNATIONAL STUDY
CENTRE**

HODs

**COORDINATORS -
R & D CELL**

**COORDINATORS -
EXTENSION ACTIVITIES**



ORGANISATIONAL STRUCTURE

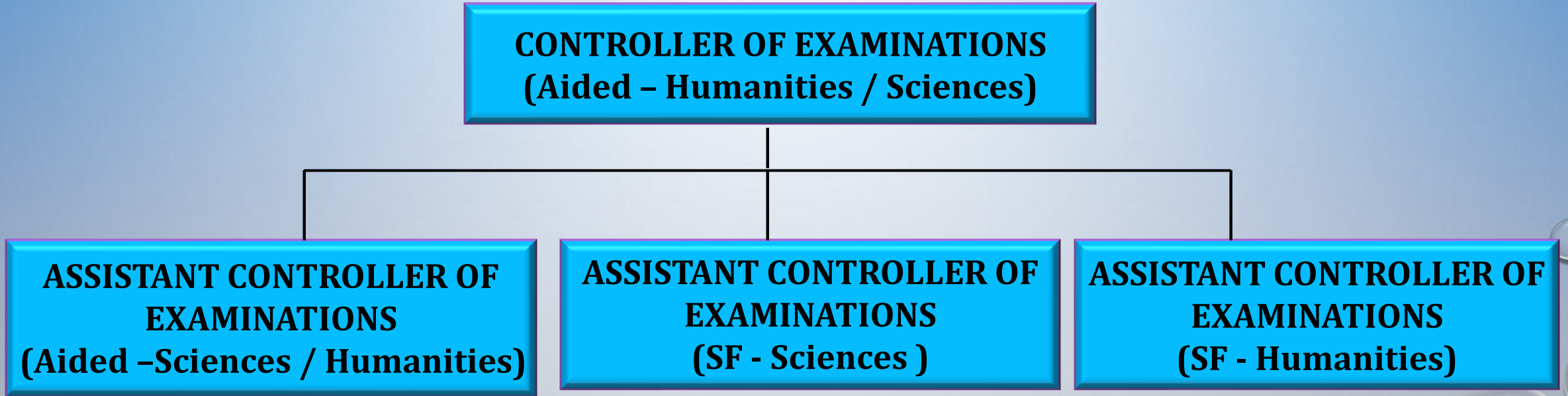
ACADEMICS

CONTROLLER OF EXAMINATIONS
(Aided – Humanities / Sciences)

ASSISTANT CONTROLLER OF EXAMINATIONS
(Aided – Sciences / Humanities)

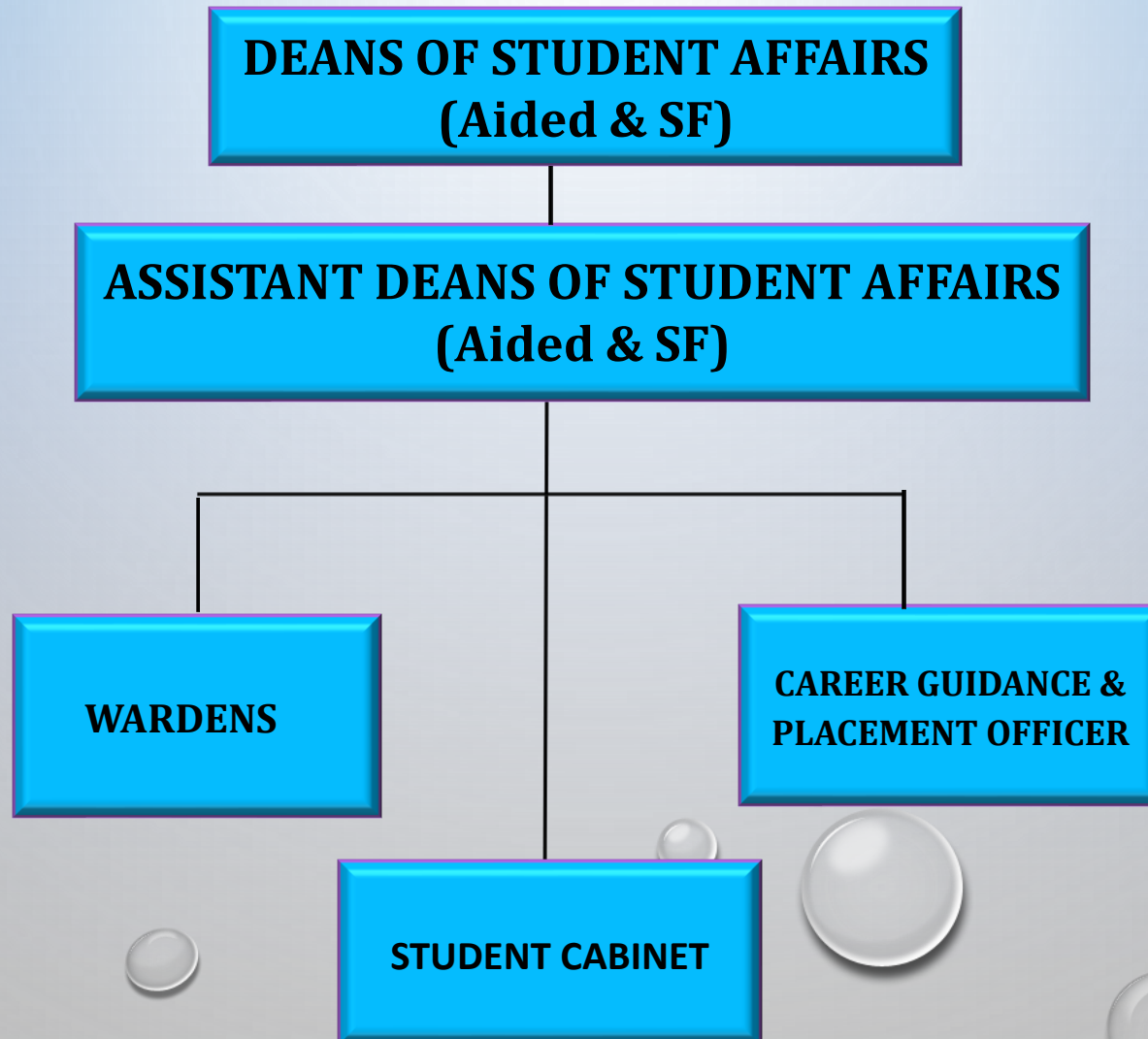
ASSISTANT CONTROLLER OF EXAMINATIONS
(SF - Sciences)

ASSISTANT CONTROLLER OF EXAMINATIONS
(SF - Humanities)



ORGANISATIONAL STRUCTURE

STUDENT CONNECT



ORGANISATIONAL STRUCTURE

SPIRITUAL CONNECT

CHAPLAIN

**COORDINATOR -
SCM**

**PERSONAL
COUNSELLOR**

**COORDINATOR -
CHRISTIAN STUDIES**

**COORDINATOR -
CHOIR**

**COORDINATOR -
CHAPEL SERVICES**

GRIEVANCE CELL COORDINATORS - FACULTY

GRIEVANCE CELL COORDINATORS - NTS

GRIEVANCE CELL COORDINATORS - STUDENTS